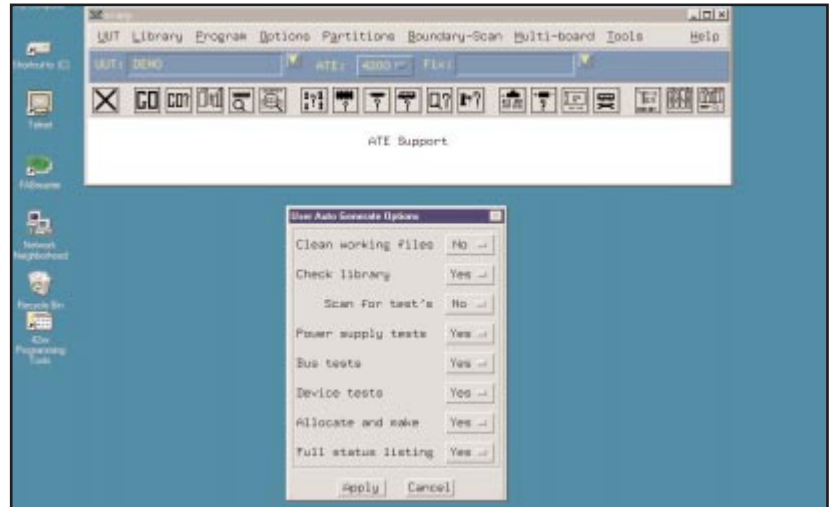




A software package to provide fixtures and guarded test programs in the shortest possible time

4200 series Computer Assisted Program Generation



- Program generation software
- PC Windows 95
- PC Windows NT
- Site licence

Computer Assisted Program Generation (CAPG) software is the method for generating programs and fixture build information for the 4200 series of manufacturing test systems.

PC Platform

The CAPG software requires an industry standard PC running Windows 95 & NT. For full graphics capability use Hummingbird's EXCEED software. Although a 486 based PC would be viewed as an absolute minimum, a higher Pentium specification would give a corresponding reduction in program generation time.

FABmaster

The CAPG software processes a circuit description file that has been generated from Computer Aided Design (CAD) files. The recommended method of producing this file is the IFR FABmaster CAD interface software.

CAPG

Using the circuit description file, CAPG will make tests for each component on the board. Circuit configuration will be accounted for by combining parallel resistors or capacitors and adopting different digital tests depending on tied modes. At this point different test methods can be requested, for instance, integrated circuit (IC) devices can use standard device models, Boundary Scan or Q-Test II depending on availability of information.

CAPG will then take information about

the resource available in the target system and a skeleton file and create a complete test program and fixture build wire and drill files.

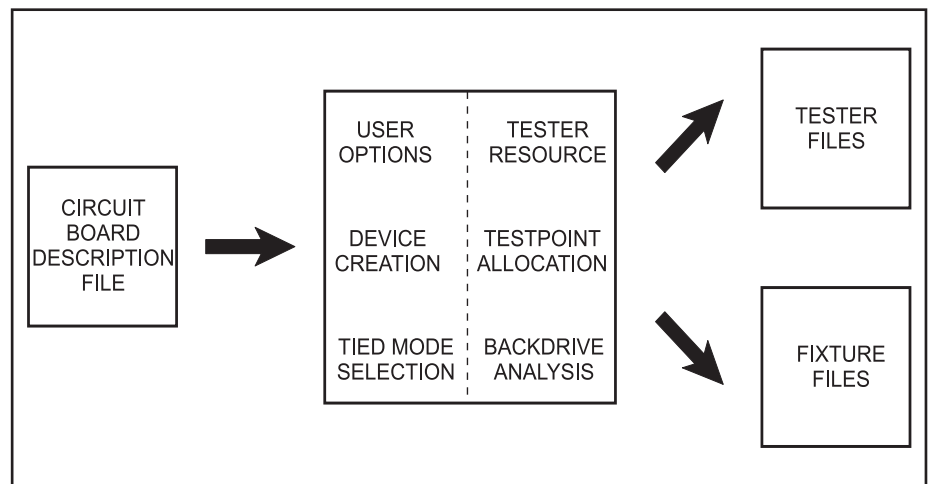
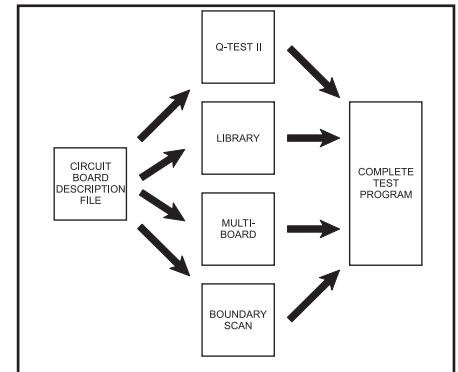
Panelization

If a panel of boards is to be tested the multi-board option can be used to create a single program for each unique board which makes up the panel. Only when the program is loaded onto the test system will multiple programs exist in memory with the correct testpoint offsets. This means that only one program must be debugged therefore shortening time to market.

Boundary Scan

As referred to earlier, CAPG can process Boundary Scan Description Language (BSDL) files and device configuration files to create either stand-alone scan tests, or

daisy chained scan tests for multiple devices. When used with the MTL run-time Boundary Scan software a 4200 series tester can obtain pin level diagnostics.



4200 series



IFR Americas, Inc., 10200 West York Street, Wichita, Kansas
67215-8999, USA. E-mail: info@ifrsys.com

Tel: +1 316 522 4981 Toll Free USA: 1 800 835 2352 Fax: +1 316 522 1360

IFR Ltd, Longacres House, Norton Green Road, Stevenage, Herts
SG1 2BA, United Kingdom. E-mail: info@ifrinternational.co.uk

Tel: +44 (0) 1438 742200 Freephone UK: 0800 282 388 Fax: +44 (0) 1438 727601

As we are always seeking to improve our products, the information in this document gives only a general indication of the product capacity, performance and suitability, none of which shall form part of any contract. We reserve the right to make design changes without notice. All trademarks are acknowledged. Parent Company IFR Systems, Inc. © IFR Ltd. 1999.

